

The Longview Assisted Living Residence

Unit Floor Plans

Effective January 1, 2019

The attached renderings provide illustrations of the four unit floor plans in the two-story portion of The Longview. This section contains 48 units. The individual units are identified as standard studios, bay studios, turret studios, and double studios. With each rendering is a listing of individual units with floor plans generally conforming to the illustration.

Unit floor plan

Standard studio

Bay studio

Turret studio*

Private and Semi-private

Double studio*

Private and Semi-private

Deluxe one-room suite*

Private and Semi-private

*Certain studios can accommodate two residents. The semi-private rate is charged to each resident when occupied on a semi-private basis. The private rate is charged to a resident occupying a turret or double studio on a private basis.

See schedule of charges for specific room rate information.



Christian
Health Care
Center

301 Sicomac Avenue
Wyckoff, New Jersey 07481
(201) 848-5200
ChristianHealthCare.org

The Longview Standard Studio

(Floor Plan Code: 1)

Unit space: 275 square feet

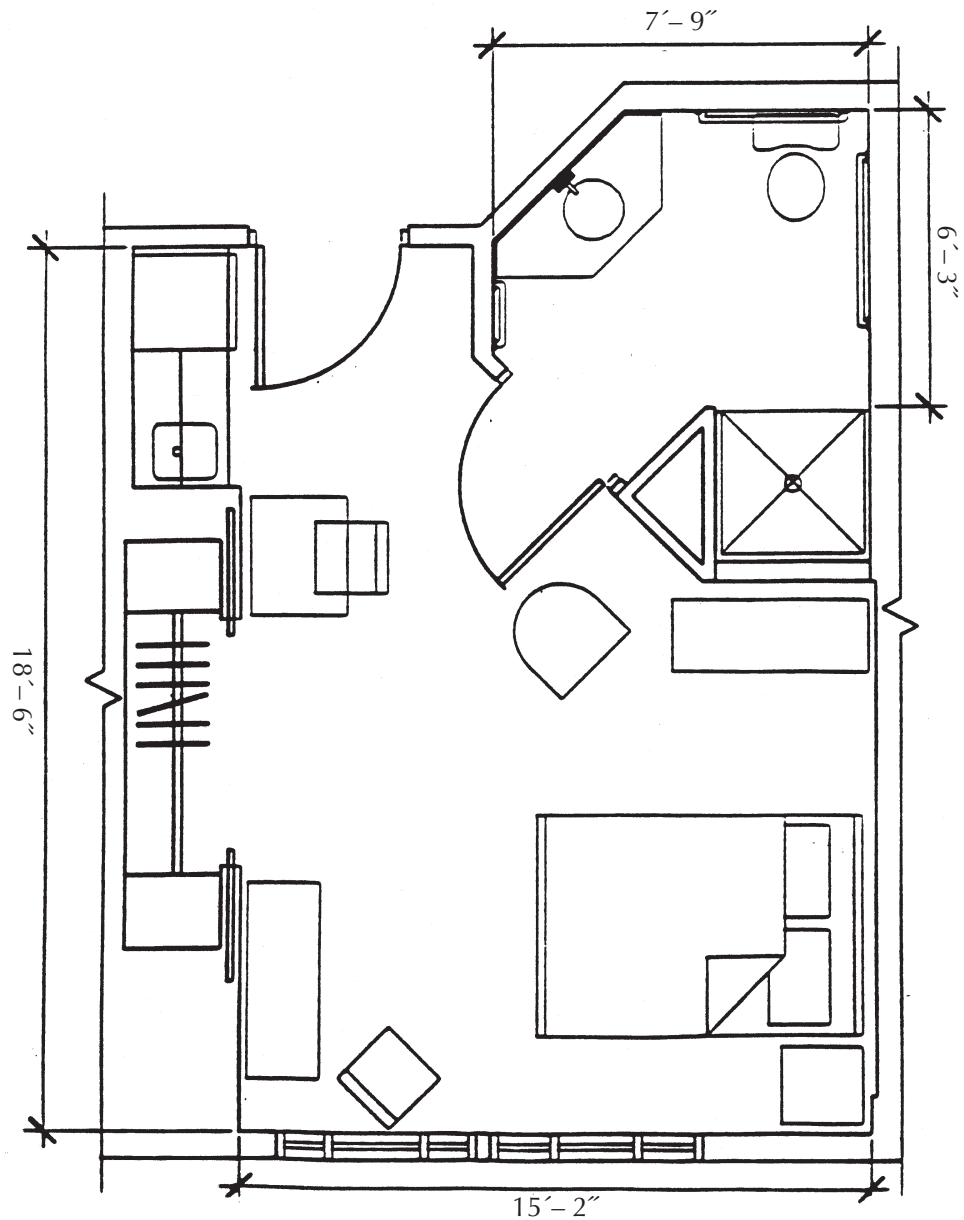
The following units have layouts similar to this rendering:

First floor: 101, 103, 106 to 111, 114 to 116

Second floor: 201, 203, 206 to 211, 214 to 219, 221, 224, 226 to 229, 232

Individual units may vary slightly from this rendering.

Furnishings for illustration purposes only. All furnishings provided by the resident.



Christian
Health Care
Center

301 Sicomac Avenue
Wyckoff, New Jersey 07481
(201) 848-5200
ChristianHealthCare.org

The Longview Bay Studio

(Floor Plan Code: 2)

Unit space: 300 square feet

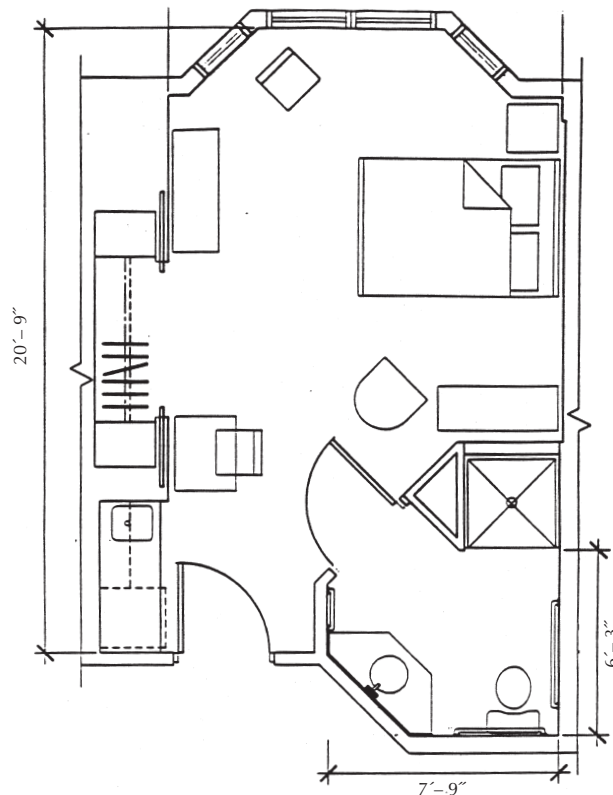
The following units have layouts similar to this rendering:

First floor: 102

Second floor: 202, 220, 225, 231

Individual units may vary slightly from this rendering.

Furnishings for illustration purposes only. All furnishings provided by the resident.



Christian
Health Care
Center

301 Sicomac Avenue
Wyckoff, New Jersey 07481
(201) 848-5200
ChristianHealthCare.org

The Longview Turret Studio

(Floor Plan Code: 3)

Unit space: 425 square feet

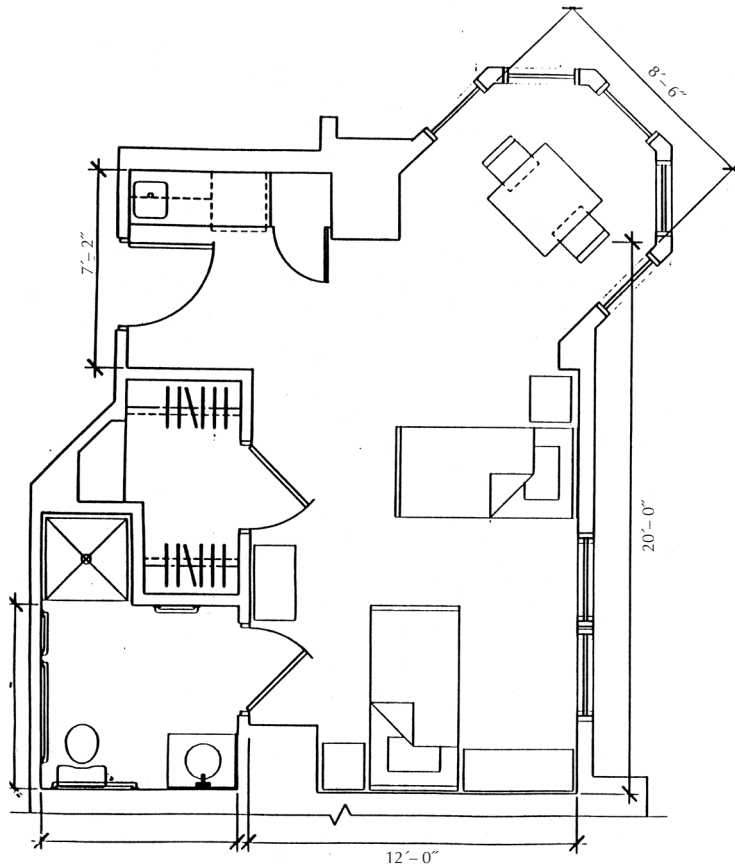
The following units have layouts similar to this rendering:

First floor: 104, 113

Second floor: 204, 213, 230

Individual units may vary slightly from this rendering.

Furnishings for illustration purposes only. All furnishings provided by the resident.



Christian
Health Care
Center

301 Sicomac Avenue
Wyckoff, New Jersey 07481
(201) 848-5200
ChristianHealthCare.org

The Longview Double Studio

(Floor Plan Code: 4)

Unit space: 400 square feet

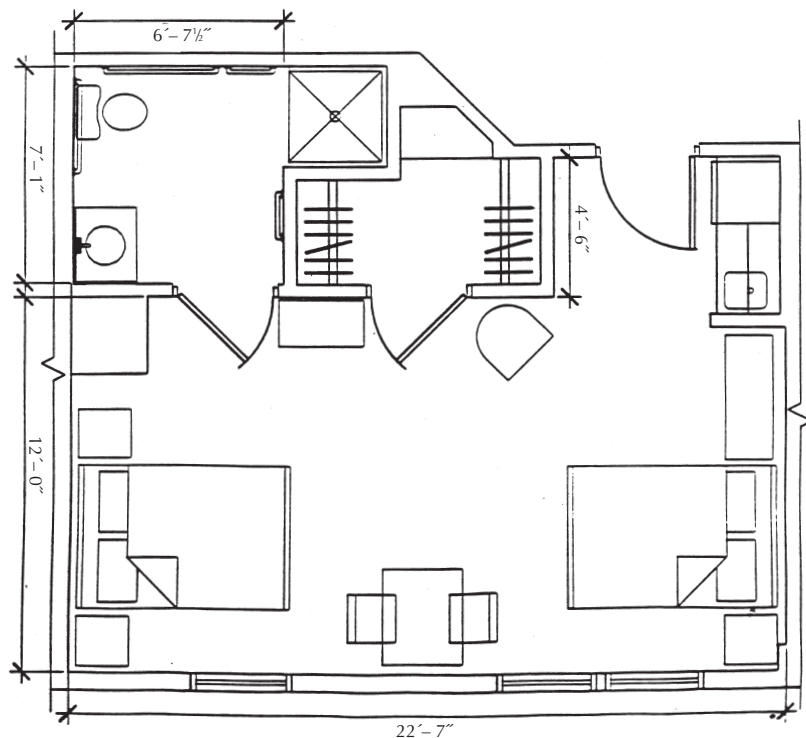
The following units have layouts similar to this rendering:

First floor: 105, 112

Second floor: 205, 212, 223

Individual units may vary slightly from this rendering.

Furnishings for illustration purposes only. All furnishings provided by the resident.



Christian
Health Care
Center

301 Sicomac Avenue
Wyckoff, New Jersey 07481
(201) 848-5200
ChristianHealthCare.org